



Sonesse Ultra 50 RTS

Sonesse Ultra 50 RTS RH

EN Instructions

FR Notice

IT Manuale

ES Manual

PT Guia

ZH 说明

KO 설치지침

دليل التركيب **AR**

ORIGINAL GUIDE

These instructions apply to all Sonesse Ultra 50 RTS and Sonesse Ultra 50 RTS RH motor irrespective of torque and speed variations.

CONTENTS

1. Prerequisite information	2	3. Use and maintenance	8
1.1 Fields of application	2	3.1. Up and Down buttons	8
1.2 Liability	3	3.2. STOP function	8
2. Installation	3	3.3. Favorite position (my)	9
2.1. Installation	3	3.4. Additional settings	9
2.2. Wiring	4	3.5. Tips and recommendations for use	9
2.3. Commissioning	5	4. Technical data	10
2.4. Tips and recommendations for installation	6		

The Sonesse Ultra 50 RTS motor has been developed for indoor use.

Its quiet operation ensures user comfort and well-being.

For more information, and to optimise the acoustic performance of your indoor application, please contact a Somfy adviser.

1. PREREQUISITE INFORMATION

1.1 FIELDS OF APPLICATION

The Sonesse 50 motor is designed to operate indoor applications (Roller blinds and projection screens).

The Sonesse 50 motor is designed to operate multi-banding roller blinds.

The Sonesse 50 motor is designed to operate multiple roller blinds simultaneously, where these are interconnected by an intermediate bracket.

The Sonesse 50 motor is not designed to be used with a compensating spring.

Any use outside the fields of application is prohibited, in particular:

The Sonesse 50 motor is not designed for outdoor applications (e.g. outdoor vertical blinds, roller shutters, etc.).

The installer, who must be a motorisation and home automation professional, must ensure that the motorised product is installed in accordance with the standards in force in the country in which it is installed such as EN 13120 relating to interior blinds.

1.2 LIABILITY

Before installing and using the motor, please read **operating and installation guide carefully**. In addition to following the instructions given in this guide, the instructions detailed in the attached **Safety instructions** document must also be observed.

The motor must be installed by a motor and home automation professional, according to instructions from Somfy and the regulations applicable in the country in which it is commissioned.

It is prohibited to use the motor outside the fields of application described above. Such use, and any failure to comply with the instructions given in this guide and in the attached **Safety instructions** document, absolves Somfy from any liability and invalidates the warranty.

The installer must inform its customers of the operating and maintenance conditions for the motor and must provide them with the instructions for use and maintenance, and the attached **Safety instructions** document, after installing the motor. Any After-Sales Service operation on the motor must be performed by a motor and home automation professional.

If in doubt when installing the motor, or to obtain additional information, contact a Somfy adviser or go to the website www.somfy.com.



Safety warning!



Caution!



Information



Up



Down

2. INSTALLATION



Instructions which **must** be followed by the motor and home automation professional installing the motor.



Never drop, knock, drill or submerge the motor.



Install a separate control point for each motor.



To optimize ultra quiet operation, the mechanical plays between motor, accessories, tube and end of tube must be decreased to the maximum.

2.1. INSTALLATION

2.1.1. Preparing the motor

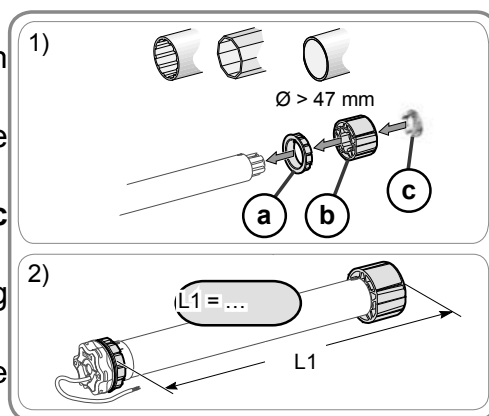
Check that the inner diameter of the tube greater than 47mm.

1) Fit the accessories required to integrate the motor in the roller tube:

- Fit the crown **a**, the motor wheel **b** and the stop wheel **c** on the motor.

The stop wheel must be screwed with a torque ranging between 1.5 and 1.8 Nm.

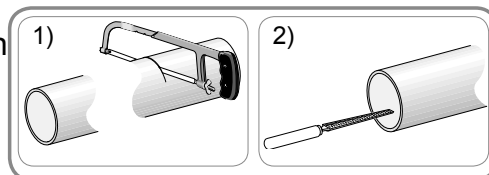
2) Measure the length (L1) between the inner edge of the motor head and the edge of the motor wheel.



2.1.2. Tube preparation

1) Cut the roller tube to the required length, depending on the motorised product.

2) Deburr the roller tube and remove the swarf.



2.1.3. Motor/tube assembly

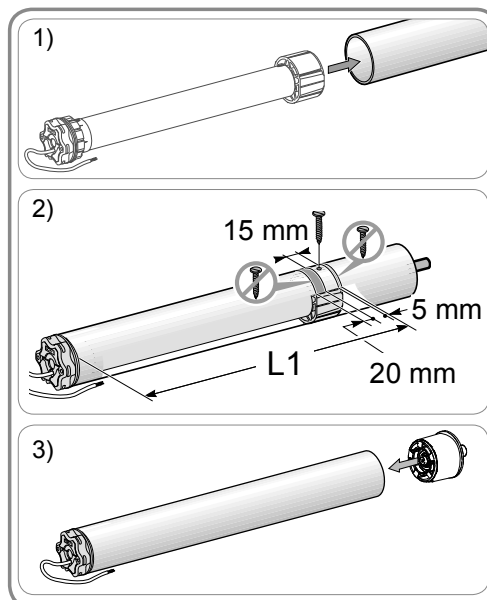
1) Slide the motor into the roller tube.

2) The motor wheel must be locked in place to prevent movement inside the roller tube:

- This can be done either by fixing the roller tube to the motor wheel using 4 x Ø 5 mm self-tapping screws, or by using 4 x Ø 4.8 mm steel pop rivets placed 5 mm to 15 mm from the outer edge of the motor wheel, regardless of the roller tube.

The screws or pop rivets must only be attached to the motor wheel and not to the motor.

3) Slide the end cap into the roller tube and ensure that the assembly is solid.



2.1.4. Installing the motor/tube assembly



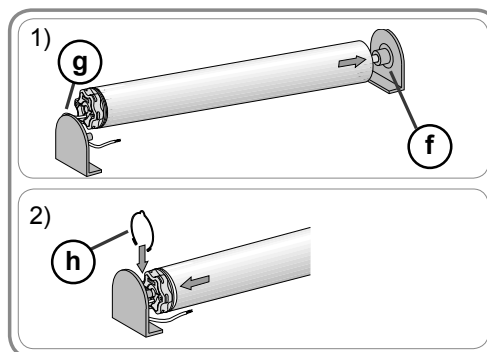
The motorised product must not be compressed between the brackets.

1) Install and fix the motor/tube assembly onto the end bracket **f** and onto the motor bracket **g**:



Ensure that the motor/tube assembly is secured onto the end bracket. This operation prevents the motor/tube assembly from coming out of the end bracket mounting when the roller blind reaches the lower end limit position.

2) For star head motors, ensure the stop ring **h** in place.



2.2. WIRING



Cables which pass through a metal wall must be protected and isolated using a grommet or sleeve.



Attach cables to prevent any contact with moving parts.



The cable on the Sonesse Ultra 50 can be removed. If it is damaged, replace it with an identical cable.

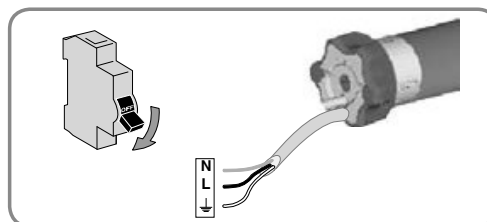


Leave the motor power supply cable accessible: it must be possible to replace it easily.

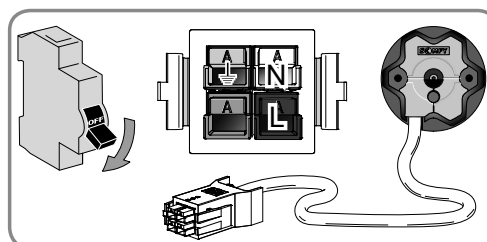
- Switch off the power supply.

- Connect the motor according to the information in the table below:

	Neutral (N)	Live (L)	Earth (⌑)
120V ~ 60 Hz	White	Black	Green
230V ~ 50 Hz	Blue	Brown	Yellow/Green
220V ~ 60 Hz	Blue	Brown	Yellow/Green



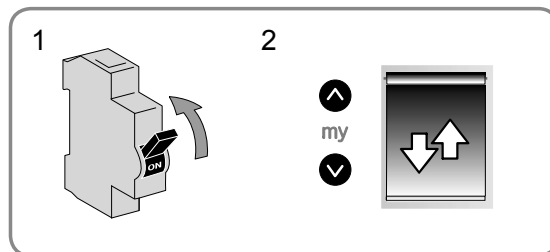
US PIGTAIL CONNECTOR CABLE			
	Neutral (N)	Live (L)	Earth (⌑)
120V -60 Hz	White	Black	Green



2.3. COMMISSIONING

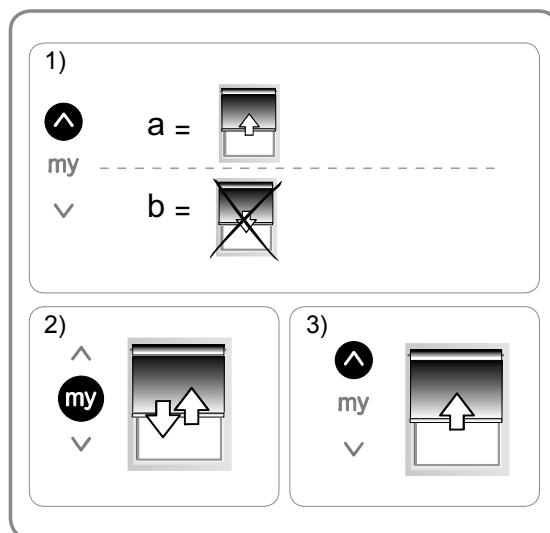
2.3.1. Pre-programming the RTS control point

- 1) Switch on the power supply.
- 2) Press the **Λ** and **V** buttons on the RTS control point at the same time: The motorised product moves up and down (fast raising and lowering), and the RTS control point is pre-programmed in the motor.



2.3.2. Checking the direction of rotation

- 1) Press the **Λ** button on the RTS control point:
 - a) If the motorised product rises (a), the direction of rotation is correct: Move onto the section entitled "Setting the end limits".
 - b) If the motorised product lowers (b), the direction of rotation is incorrect: Move onto the next step.
- 2) Press the **my** button on the RTS control point until the motorised product moves up and down: The direction of rotation has been modified.
- 3) Press the **Λ** button on the RTS control point to check the direction of rotation.

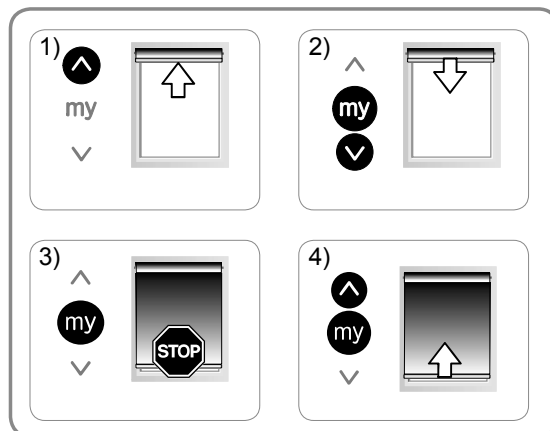


2.3.3. Setting the end limits

i The end limits can be set in any order.

- 1) Raise the motorised product to the desired position by pressing the **Λ** button.
- 2) Press the **my** and **V** buttons at the same time until the motorised product moves.
The upper end limit is memorised.
- 3) Press the **my** button when the motorised product reaches the desired lowered position. If necessary, adjust the position of the motorised product using the **Λ** and **V** buttons.
- 4) Press the **my** and **Λ** buttons at the same time until the motorised product moves.

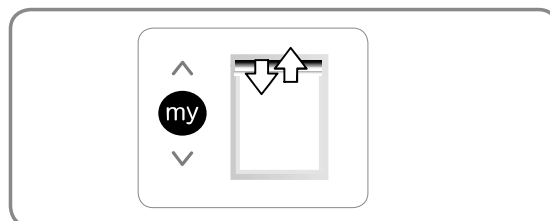
The lower end limit is memorised. The motorised product rises and stops in the raised position.



2.3.4. Validation of the setting

To confirm the end limits, press the **my** button until the motorised product moves up and down.

The end limits are programmed.

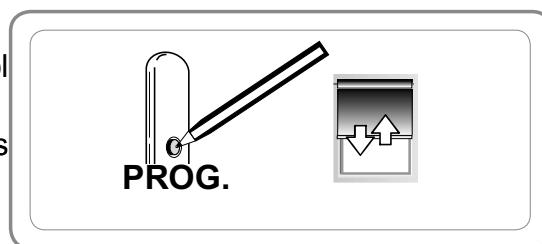


2.3.5. Recording the RTS control point

The motorisation is in programming mode:

-- Quickly press the PROG button on the RTS control point to be programmed:

→The motorised product moves up and down: this RTS control point is programmed in the motorisation.



i If the motorisation is no longer in programming mode, repeat Step 2.3.1 then perform Step 2.3.4.

2.3.6. Adding/Deleting Somfy control points and sensors

Refer to the corresponding guide.

2.4. TIPS AND RECOMMENDATIONS FOR INSTALLATION

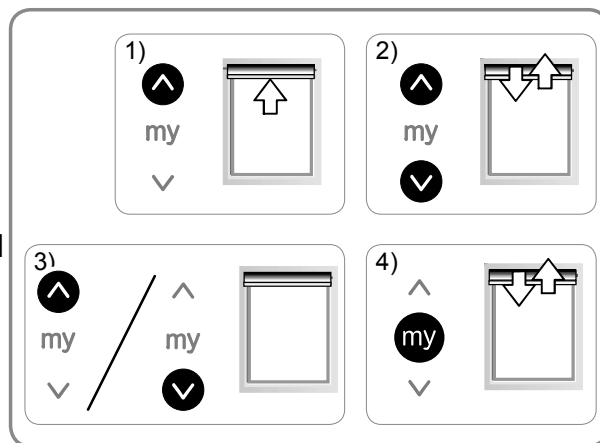
2.4.1. Questions about the Sonesse Ultra 50 RTS?

Observations	Possible causes	Solutions
The motorised product does not operate.	The wiring is incorrect.	Check the wiring and modify it if necessary.
	The Motor is in thermal protection.	Wait until the motor cools down.
	The control point battery is weak.	Check whether the battery is weak and replace it if necessary.
	The control point is not compatible.	Check for compatibility and replace the control point if necessary.
	The control point used has not been programmed into the motor.	Use a programmed control point or program this control point.
The motorised product is noisy:	The motor wheel and the crown are not suitable for the tube.	Replace the motor wheel and the crown
	The motorised product is compressed between the brackets	Increase the play between the brackets
	The tube contains swarf and screws.	Clean the roller tube.
The motorised product stop to soon or to late.	The end-limits of the motorised product drift.	Readjust the end-limits

2.4.2. Readjusting the end limits

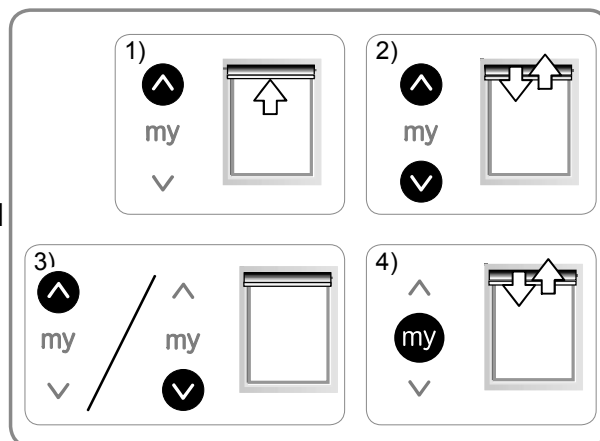
Readjusting the upper end limit

- 1) Press the **▲** button to bring the motorised product to the end limit to be readjusted.
- 2) Press the **▲** and **▼** buttons at the same time until the motorised product moves up and down.
- 3) Press the **▲** or **▼** button to move the motorised product to the new desired position.
- 4) To confirm the new end limit, press the **my** button until the motorised product moves up and down.



Readjusting the lower end limit

- 1) Press the **▼** button to bring the motorised product to the end limit to be readjusted.
- 2) Press the **▲** and **▼** buttons at the same time until the motorised product moves up and down.
- 3) Press the **▲** or **▼** button to move the motorised product to the new desired position.
- 4) To confirm the new end limit, press the **my** button until the motorised product moves up and down.



2.4.3. Replacing a lost or broken Somfy control point

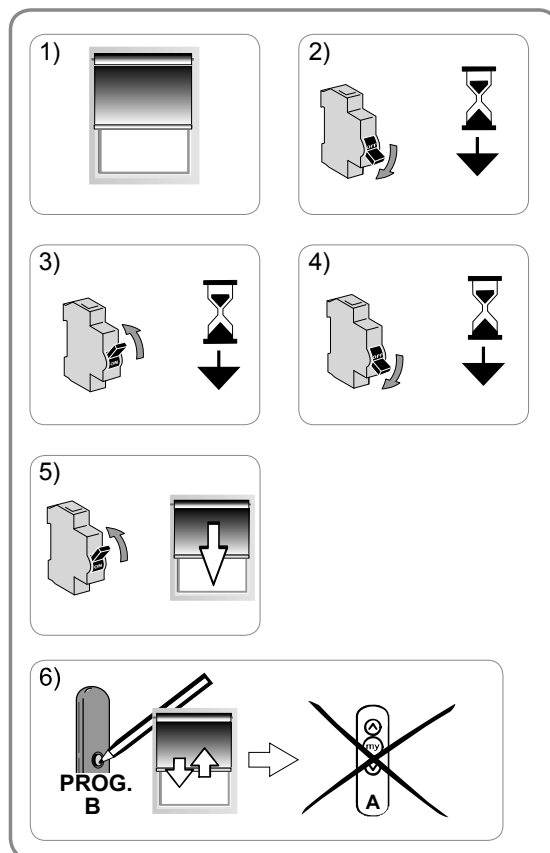


Only switch off the power to the application to be reset.





This reset deletes all the local control points, however the sensors, end limit settings and favourite position are retained.

- 1) Position the motorised product at the mid-height position.
- 2) Switch off the power supply for 2 seconds.
- 3) Switch the power supply back on for 5 to 15 seconds.
- 4) Switch off the power supply for 2 seconds.
- 5) Switch the power supply back on: the motorised product moves for a few seconds. (If the application is in the upper or lower limit position, it will make a brief up and down movement).
- 6) Press the PROG button on the new control point until the motorised product moves up and down: the new control point is programmed and all the other control points are deleted.

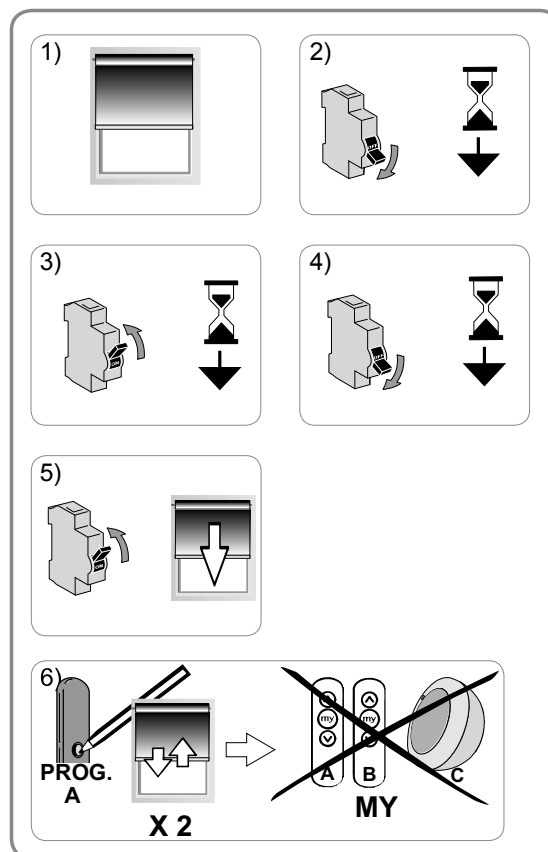


2.4.4. Restoring the original configuration


 Only switch off the power to the application to be reset.


 This reset deletes all control points, all the sensors and all the end limit settings, and resets the motor's favourite position (my).

- 1) Position the motorised product at the mid-height position.
 - 2) Switch off the power supply for 2 seconds.
 - 3) Switch the power supply back on for 5 to 15 seconds.
 - 4) Switch off the power supply for 2 seconds.
 - 5) Switch the power supply back on: the motorised product moves for a few seconds. (If the application is at the upper or lower end limit, it will make a brief up and down movement).
 - 6) Press the PROG button on the Somfy local control point for **≈ 7 seconds**, until the motorised product moves up and down twice:
 - The motorisation is reset to the original configuration.
- Repeat the commissioning procedure (see **Commissioning**) section.



3. USE AND MAINTENANCE

 This motor is maintenance-free

 For the safety of goods and people, Somfy motors are equipped with thermal protection that will trigger the motor stops in the event of overheating.

Repeated activation of this protection can degrade motor performance.

If the motor goes to thermal protection, please check your installation and check that the motor is rated for the intended use.

A normal installation is not expected to trigger this protection.

To avoid the drift of the end limits, do not cut the power supply more than 1 week.

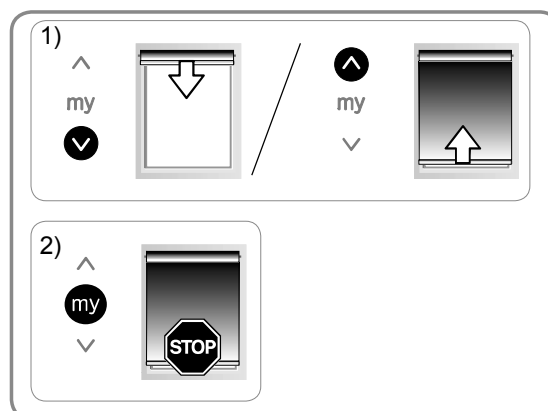
3.1. UP AND DOWN BUTTONS

Pressing the **Λ** or **V** button fully raises or lowers the motorised product.

3.2. STOP FUNCTION

The motorised product is moving.

- **Briefly** press **my**: the motorised product stops automatically.




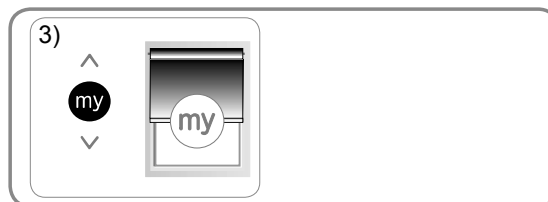
3.3. FAVORITE POSITION (my)

Besides the upper and lower positions, an intermediate position known as the “favourite position (my)” can be programmed in the Sonesse 50.

To use the favourite position (my):

- **Briefly press my**: the motorised product starts to move, and stops in the favourite position (my).

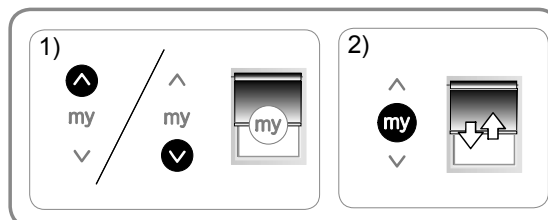
 To modify or delete the favourite (my) position, see the section entitled “Additional settings”.



3.4. ADDITIONAL SETTINGS

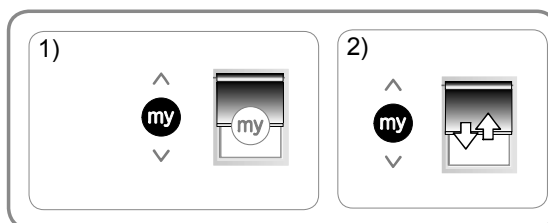
3.4.1. Record or Modify the favourite position (my)

- 1) Place the motorised product in the desired favourite position (my).
- 2) Press **my** for ≈ 5 seconds until the motorised product moves up and down: the desired favourite position (my) has been programmed.



3.4.2. Deleting the favourite position (my)

- 1) Press **my**: the motorised product starts to move, and stops in the favourite position (my).
- 2) Press **my** again until the motorised product moves: the favourite position (my) is deleted.



3.5. TIPS AND RECOMMENDATIONS FOR USE

3.5.1. Questions about the Sonesse Ultra 50 RTS?

Observations	Possible causes	Solutions
The motorised product does not operate.	The control point battery is weak.	Check whether the battery is weak and replace it if necessary.
	The motor is in thermal protection mode.	Wait for the motor to cool down.

If the motorised product still does not work, contact a motorisation and home automation professional.

3.5.2. Replacing a lost or broken Somfy control point

To replace a lost or broken control point, contact a motorisation and home automation professional.

4. TECHNICAL DATA

Power supply	230V ~ 50 Hz	120V ~ 60 Hz	220V ~ 60 Hz
Radio frequency	433.42 MHz		447.7 MHz
Operating temperature	0°C to + 60°C		
Index protection rating	IP 31		
Safety level	Class I		
Maximum number of control points	12		
Maximum number of sensors	3		

CE SOMFY ACTIVITES SA, F-74300 CLUSES as manufacturer hereby declares that the drive covered by these instructions when marked for input voltage 230V~50Hz and used as intended according to these instructions, is in compliance with the essential requirements of the applicable European Directives and in particular of the Machinery Directive **2006/42/EC**, and the Radio Directive **2014/53/EU**.

The full text of the EU declaration of conformity is available at www.somfy.com/ce.

Antoine Crézé, Approval manager, acting on behalf of Activity director, Cluses, 09/2017.