



# Sonesse Ultra 50

## Sonesse Ultra 50 RH

**DE** Anleitung  
**NL** Handleiding  
**DA** Brugsanvisning  
**FI** Käyttöopas  
**SV** Bruksanvisning  
**NO** Veiledning  
**RU** Инструкции  
**TR** Talimatlar

**EN** Instructions  
**FR** Notice  
**IT** Manuale  
**ES** Manual  
**PT** Guia  
**ZH** 说明  
**KO** 설치지침  
دليل التركيب **AR**

# ORIGINAL GUIDE

These instructions applies to all Sonesse Ultra 50 and Sonesse Ultra 50 RH drive, the different versions of which are available in the current catalogue.

## CONTENTS

<b>1. Prerequisite information</b>	<b>50</b>	<b>3. Use and maintenance</b>	<b>55</b>
1.1 Fields of application	50	3.1. Up and Down buttons	55
1.2 liability	51	3.2. STOP function	55
<b>2. Installation</b>	<b>51</b>	3.3. Tips and recommendations for use	55
2.1. Installation	51	<b>4. Technical data</b>	<b>55</b>
2.2. Wiring	52		
2.3. Commissioning	53		
2.4. Tips and recommendations for installation	54		

The Sonesse Ultra 50 motor has been developed for indoor use.

Its quiet operation ensures user comfort and well-being.

For more information, and to optimise the acoustic performance of your indoor application, please contact a Somfy adviser.

## 1. PREREQUISITE INFORMATION

### 1.1 FIELDS OF APPLICATION

The Sonesse 50 motor is designed to operate indoor applications (Roller blinds and projection screens).

The Sonesse 50 motor is designed to operate multi-banding roller blinds.

The Sonesse 50 motor is designed to operate multiple roller blinds simultaneously, where these are interconnected by an intermediate bracket.

The Sonesse 50 motor is not designed to be used with a compensating spring.

Any use outside the fields of application is prohibited, in particular:

The Sonesse 50 motor is not designed for outdoor applications (e.g. outdoor vertical blinds, roller shutters, etc.)

The installer, who must be a motorisation and home automation professional, must ensure that the motorised product is installed in accordance with the standards in force in the country in which it is installed such as EN 13120 relating to interior blinds.

## 1.2 LIABILITY

Before installing and using the motor, please read **operating and installation guide carefully**. In addition to following the instructions given in this guide, the instructions detailed in the attached **Safety instructions** document must also be observed.

**The motor must be installed by a motor and home automation professional, according to instructions from Somfy and the regulations applicable in the country in which it is commissioned.**

It is prohibited to use the motor outside the fields of application described above. Such use, and any failure to comply with the instructions given in this guide and in the attached **Safety instructions** document, absolves Somfy from any liability and invalidates the warranty.

The installer must inform its customers of the operating and maintenance conditions for the motor and must provide them with the instructions for use and maintenance, and the attached **Safety instructions** document, after installing the motor. Any After-Sales Service operation on the motor must be performed by a motor and home automation professional.

If in doubt when installing the motor, or to obtain additional information, contact a Somfy adviser or go to the website [www.somfy.com](http://www.somfy.com).



Safety warning!



Caution!



Information



Up



Down

## 2. INSTALLATION



Instructions which **must** be followed by the motor and home automation professional installing the motor.



Never drop, knock, drill or submerge the motor.



Install a separate control point for each motor.



To optimize ultra quiet operation, the mechanical plays between motor, accessories, tube and end of tube must be decreased to the maximum.

### 2.1. INSTALLATION

#### 2.1.1. Preparing the motor

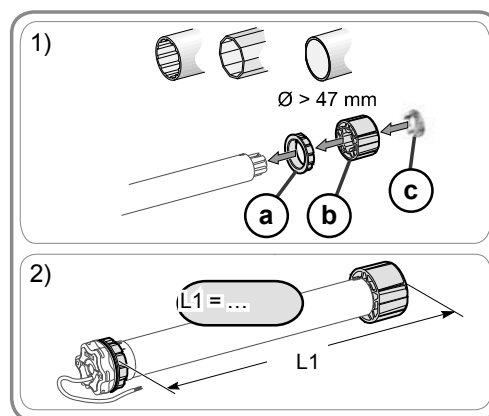
Check that the inner diameter of the tube greater than 47mm.

1) Fit the accessories required to integrate the motor in the roller tube:

- Fit the crown **a**, the motor wheel **b** and the stop wheel **c** on the motor.

The stop wheel must be screwed with a torque ranging between 1.5 and 1.8 Nm.

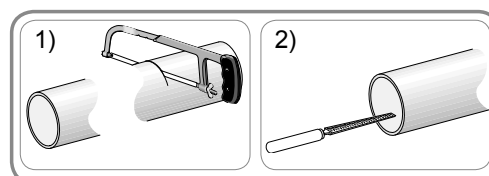
2) Measure the length (L1) between the inner edge of the motor head and the edge of the motor wheel.



#### 2.1.2. Tube preparation

1) Cut the roller tube to the required length, depending on the motorised product.

2) Deburr the roller tube and remove the swarf.



### 2.1.3. Motor/tube assembly

1) Slide the motor into the roller tube.

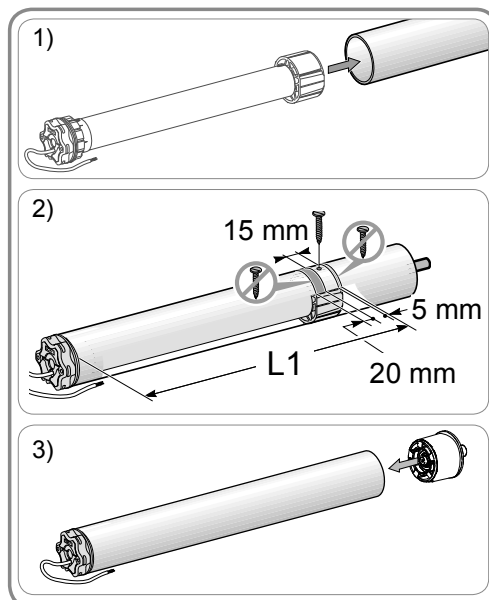
2) The motor wheel must be locked in place to prevent movement inside the roller tube:

- This can be done either by fixing the roller tube to the motor wheel using 4 x Ø 5 mm self-tapping screws, or by using 4 x Ø 4.8 mm steel pop rivets placed 5 mm to 15 mm from the outer edge of the motor wheel, regardless of the roller tube.



The screws or pop rivets must only be attached to the motor wheel and not to the motor.

3) Slide the end cap into the roller tube and ensure that the assembly is solid.



### 2.1.4. Installing the motor/tube assembly



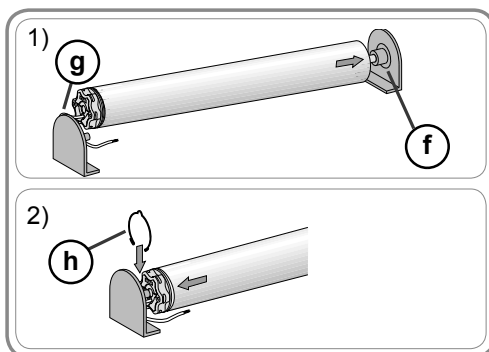
The motorised product must not be compressed between the brackets.

1) Install and fix the motor/tube assembly onto the end bracket **f** and onto the motor bracket **g**:



Ensure that the motor/tube assembly is secured onto the end bracket. This operation prevents the motor/tube assembly from coming out of the end bracket mounting when the roller blind reaches the lower end limit position.

2) For star head motors, ensure the stop ring **h** in place.



## 2.2. WIRING

**⚠** Cables which pass through a metal wall must be protected and isolated using a grommet or sleeve.

**⚠** Attach cables to prevent any contact with moving parts.

**⚠** The cable on the Sonesse Ultra 50 can be removed. If it is damaged, replace it with an identical cable.

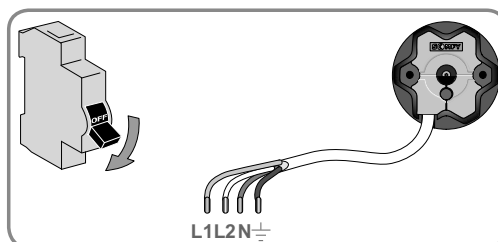


Leave the motor power supply cable accessible: it must be possible to replace it easily.

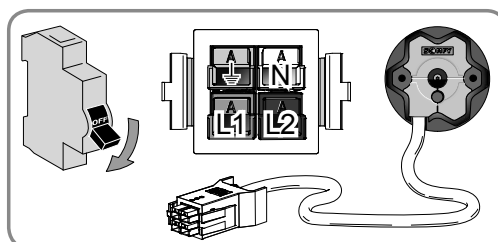
- Switch off the power supply.

- Connect the motor according to the information in the table below:

	Neutral (N)	Live (L1)	Live (L2)	Earth (⏏)
120V ~ 60 Hz	White	Black	Red	Green
100V ~ 50/60 Hz				
230V ~ 50 Hz	Blue	Black	Brown	Yellow/Green
220V ~ 60 Hz				



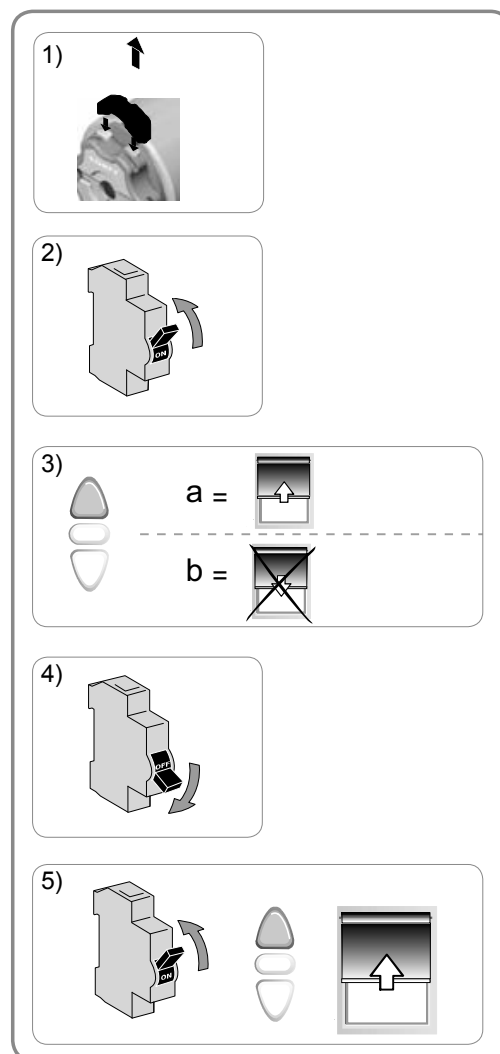
US PIGTAIL CONNECTOR CABLE				
	Neutral (N)	Live (L1)	Live (L2)	Earth (⏏)
120V -60 Hz	White	Black	Red	Green



## 2.3. COMMISSIONING

### 2.3.1. Checking the direction of rotation

- 1) Remove the protective housing.  
Press the white and yellow buttons simultaneously.
  - 2) Switch the power back on.
  - 3) Press the **▲** button on the control point:
    - a) If the motorised product rises (a), the direction of rotation is correct: Move onto the section entitled "Setting the end limits".
    - b) If the motorised product lowers (b), the direction of rotation is incorrect: Move onto the next step.
  - 4) Switch off the power supply.  
Reverse the 2 phase wires on the control point.
  - 5) Switch the power back on.
- Press the **▲** button on the control point to check the direction of rotation.



### 2.3.2. Setting the end limits

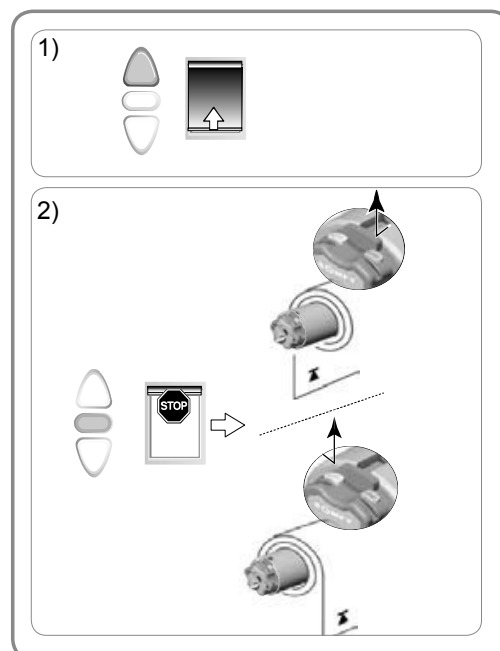
**The end limits can be set in any sequence.**

#### Setting the upper end limit

- 1) Press the **▲** button on the control point to raise the motorised product to the upper end limit.
- 2) Press the **Stop** button on the control point when the motorised product reaches the desired upper end limit.

Looking from the point of view of the motor head:

- If the motorised product rises on the left-hand side of the motor head, press the yellow button to unlock it: the upper end limit is set.
- If the motorised product rises on the right-hand side of the motor head, press the white button to unlock it: the upper end limit is set.

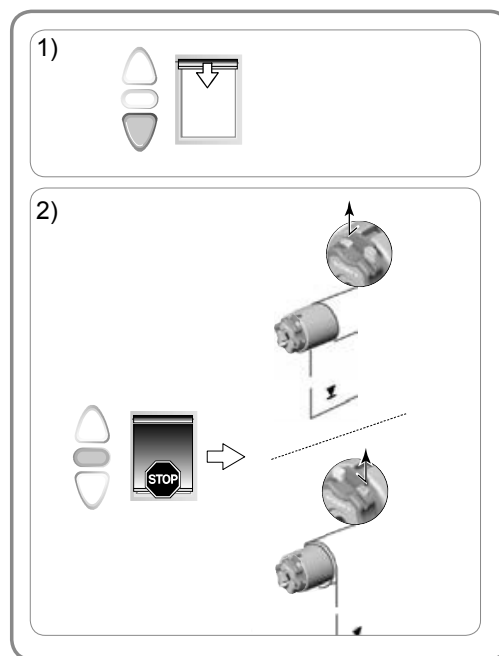


## Setting the lower end limit

- 1) Press the **V** button on the control point to lower the motorised product to the lower end limit.
- 2) Press the **Stop** button on the control point when the motorised product reaches the desired lower end limit.

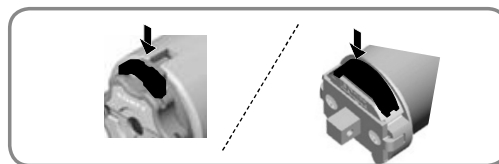
Looking from the point of view of the motor head:

- If the motorised product lowers on the left-hand side of the motor head, press the white button to unlock it: the lower end limit is set.
- If the motorised product lowers on the right-hand side of the motor head, press the yellow button to unlock it: the lower end limit is set.



## Refit the protective housing.

The end limits are set.



## 2.4. TIPS AND RECOMMENDATIONS FOR INSTALLATION

### 2.4.1. Questions about the Sonesse Ultra 50?

Observations	Possible causes	Solutions
The motorised product does not operate.	The wiring is incorrect.	Check the wiring and modify it if necessary.
	The motor is in thermal protection.	Wait until the motor cools down.
	The control point is not compatible.	Check for compatibility and replace the control point if necessary.
The motorised product is noisy:	The drive wheel and the crown are not suitable for the tube.	Replace the drive wheel and the crown
	The motorised product is compressed between the brackets	Increase the play between the brackets
	The tube contains swarf and screws.	Clean the roller tube.
The motorised product stop too soon or too late.	The end-limits of the motorised product drift.	Readjust the end-limits

### 3. USE AND MAINTENANCE

**i** This motor is maintenance-free



For the safety of goods and people, Somfy motors are equipped with thermal protection that will trigger the motor stops in the event of overheating.

Repeated activation of this protection can degrade motor performance.

If the motor goes to thermal protection, please check your installation and check that the motor is rated for the intended use.

A normal installation is not expected to trigger this protection.

To avoid the drift of the end limits, do not cut the power supply more than 1 week.

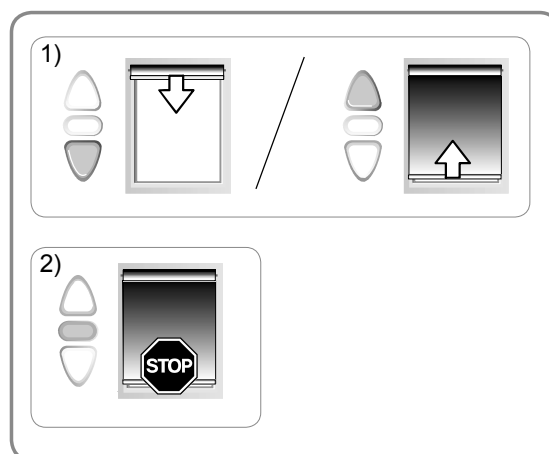
#### 3.1. UP AND DOWN BUTTONS

Pressing the **Λ** or **V** button fully raises or lowers the motorised product.

#### 3.2. STOP FUNCTION

The motorised product is moving.

Pressing the **Stop** button stops the motorised product.



#### 3.3. TIPS AND RECOMMENDATIONS FOR USE

##### 3.3.1. Questions about the Sonesse Ultra 50?

Observations	Possible causes	Solutions
The motorised product does not operate.	The motor is in thermal protection.	Wait until the motor cools down.

If the motorised product still does not work, contact a drive and home automation professional.

### 4. TECHNICAL DATA

Power supply	230V ~ 50 Hz	120V ~ 60 Hz	220V ~ 60 Hz	100V ~ 50/60 Hz
Operating temperature	0°C to + 60°C			
Index protection rating	IP 31			
Safety level	Class I			



SOMFY ACTIVITES SA, F-74300 CLUSES as manufacturer hereby declares that the drive covered by these instructions when marked for input voltage 230V~50Hz and used as intended according to these instructions, is in compliance with the essential requirements of the applicable European Directives and in particular of the Machinery Directive **2006/42/EC** and EMC Directive **2014/30/EU**.

The full text of the EU declaration of conformity is available at [www.somfy.com/ce](http://www.somfy.com/ce).

Antoine Crézé, Approval manager, acting on behalf of Activity director, Cluses, 09/2017.